

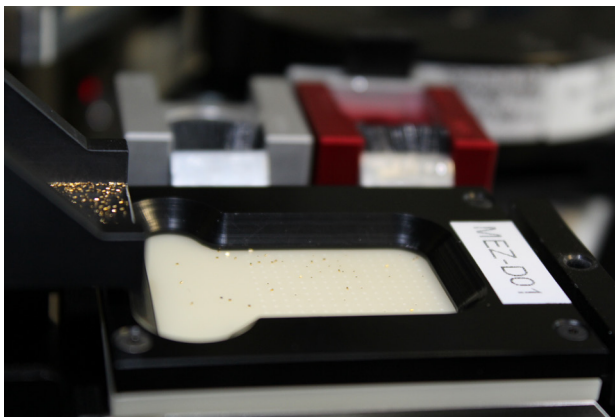
# MICROHANDLING OF MULTIPLE COMPONENTS

## CHALLENGES

- ▶ To handle components (finished or unfinished) and guarantee accurate placement without damage
- ▶ To manage a highly diverse range of components (geometry, material, surface condition, etc.)
- ▶ To propose an intuitive human-machine interface, focussed on end user needs
- ▶ To position the components on several types of magazine (pallets, tubes, fixtures, etc.)
- ▶ To ensure speeds of less than 3 s
- ▶ To guarantee perfect placement within a demanding insertion tolerance range ( $\pm 5 \mu\text{m}$ )

## ADVANTAGES

- ▶ No risk of damage to components
- ▶ Machining supports and conditioning can be defined to meet your needs
- ▶ Faultless accuracy at a constant speed

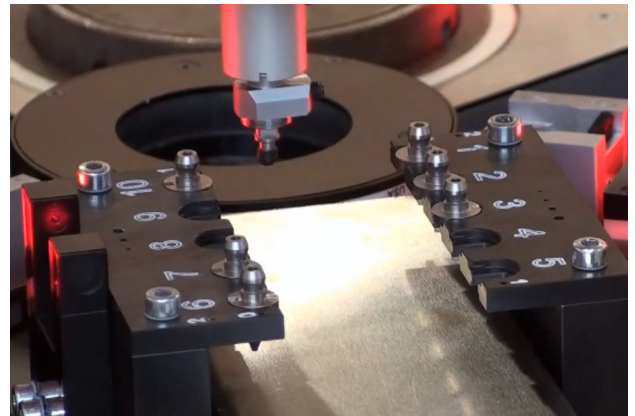


## GENERAL SPECIFICATIONS

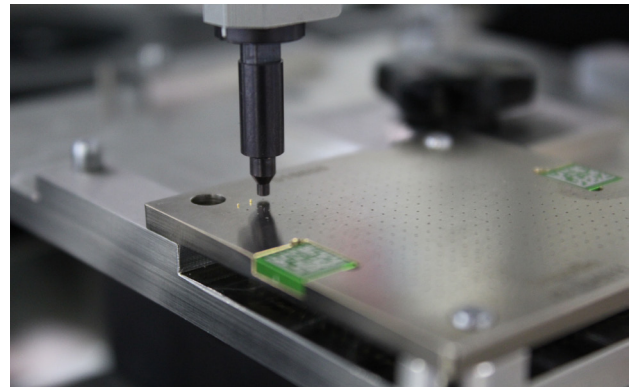
Rate	up to 3600 components/hour
Production changeover times	< 1 min
Accuracy	$\pm 5 \mu\text{m}$

## RESULTS

- ▶ No damage observed on the components
- ▶ Automation of a highly complex and labour-intensive process



*Automatic management of grippers or calibration tools*



*Palletisation of a gold pin ( $\varnothing 0.1 \times 0.2\text{mm}$ )*

